



c o l o r • c h a r t  
for interior applications

ALPOLIC®/fr LT

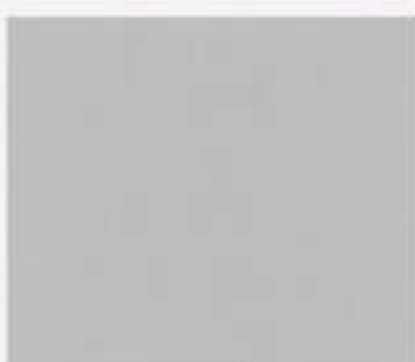
 MITSUBISHI PLASTICS

URL <http://www.alpolic.com>

ALPOLIC®/fr LT *Reversible*



R-1 Pure White P (G90)



R-1 Silver P (G80)



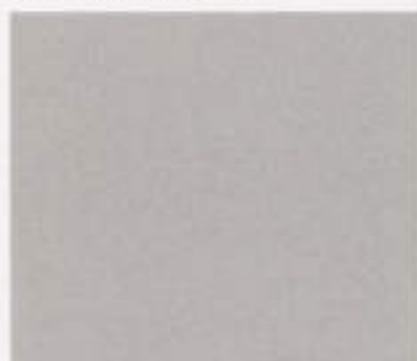
R-2 White P (G30)



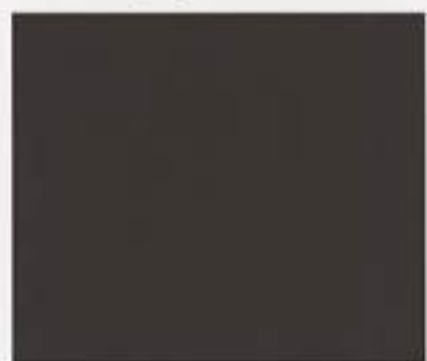
R-2 Champagne Metallic P (G30)



R-3 Light Beige P (G30)



R-3 Silver Metallic P (G30)



R-4 Black P (G30)



R-4 Polished Beige P (G90)

**Note:** "Reversible" has each individual color on both sides. For example, R-1 is a combination panel of Pure White P and Silver P.

ALPOLIC®/fr LT *Single*



N-5 Off White P (Matte)



M-6 Gray Metallic P (Matte)



M-7 Aluminum Hairline P (G90)



N-8 Piano Black P (G90)

**Legend :** Bottom of each color chip indicates color code, color name and gloss rate respectively.

---

ALPOLIC®/fr LT *Stone*

---



S-5 White Marble (G90)



S-6 Venetian Marble (G90)

---

ALPOLIC®/fr LT *Timber*

---



W1 Maple (Matte)



W-2 Walnut (Matte)



W-3 Mahogany (Matte)

- Note:** •Color chips herein may differ slightly from actual colors due to attributes of printing. Please confirm actual color with the color sample.
- Gloss rate is indicated by extension to color name: Matte or 30% to 90% gloss. Matte is derived from a unique coating technology, in which microscopic wrinkles are formed over the coated surface and accordingly, it shows the appearance of Matte.
  - Custom colors and custom gloss are available in all types of finishes, subject to the respective minimum quantity. If you mention the custom color, please specify the gloss rate as well.
  - In case of Metallic Colors, Stone and Timber-patterned finishes, the color may vary slightly between production lots. Therefore, we recommend that you place total requirement in one order, to ensure color consistency for these colors.



©2009 Mitsubishi Plastics, Inc. All rights reserved.  
ALPOLIC® is a registered trademark of Mitsubishi Plastics, Inc.

**Mitsubishi Plastics, Inc.**  
Industrial Materials Division  
Composite Materials Department  
Mitsubishi Plastics Building  
2-2, Nihonbashi Hongokuchō 1-chōme, Chuo-ku  
Tokyo 103-0021 Japan  
Telephone: 81-3-3279-3064 / 3065  
Facsimile: 81-3-3279-6672  
e-mail: mks-ho-apolpic@cc.m-kagaku.co.jp

**Mitsubishi Plastics, Inc.**  
Turkey Liaison Office  
Bağlarbasi Kiskili Cad., No: 4,  
Sarkuysan-Ak Is Merkezi, S-Blok, Teras Kat,  
Altunizade, Uskudar, 34664 Istanbul, Turkey  
Telephone: 90-216-651-8670/ 71/ 72  
Facsimile: 90-216-651-8673  
e-mail: info@apolpic.com.tr

**Mitsubishi Chemical Singapore Pte Ltd.**  
79 Anson Road, #12-01 Singapore 079906  
Telephone: 65-6226-1597  
Facsimile: 65-6221-3373  
e-mail: SIN0027@cc.m-kagaku.co.jp

**Mitsubishi Plastics Composites America Inc.**  
401 Volvo Parkway, Chesapeake, VA 23320  
Telephone (USA): 1-800-422-7270  
Telephone (International): 1-757-382-5750  
Facsimile: 1-757-436-1896  
e-mail: info@apolpic.com

Distributed by

ALPOLIC®/fr LT  
URL <http://www.apolpic.com>